

## CET1-AX-LRA-00-50X-SA (ORDER NO. 095735)

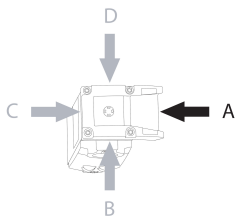
Read head CET1-AX-..., M12, with guard locking and guard lock monitoring

- ▶ Read head with guard locking
- ▶ Locking force up to 6500 N
- ▶ Up to category 4/PL e according to EN ISO 13849-1
- ▶ With plug connector M12
- ▶ 2 LEDs (1 freely configurable)
- ▶ Approach direction A (delivery state)



### Description

#### Approach direction



Figure

Horizontal

Can be adjusted in 90° steps

#### Solenoid operating voltage

- ▶ DC 24 V +10% -15%

#### Guard locking type

CET1 Closed-circuit current principle, guard locking by spring force. Release by applying voltage to the guard locking solenoid.

#### LED function display

LED rot illuminates when solenoid is switched on

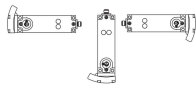
LED grün freely configurable

## Category according to EN ISO 13849-1

**Important:** The category according to EN ISO 13849-1 depends on the evaluation unit used and on the installation orientation.



3 / PL e



4 / PL e

Figure

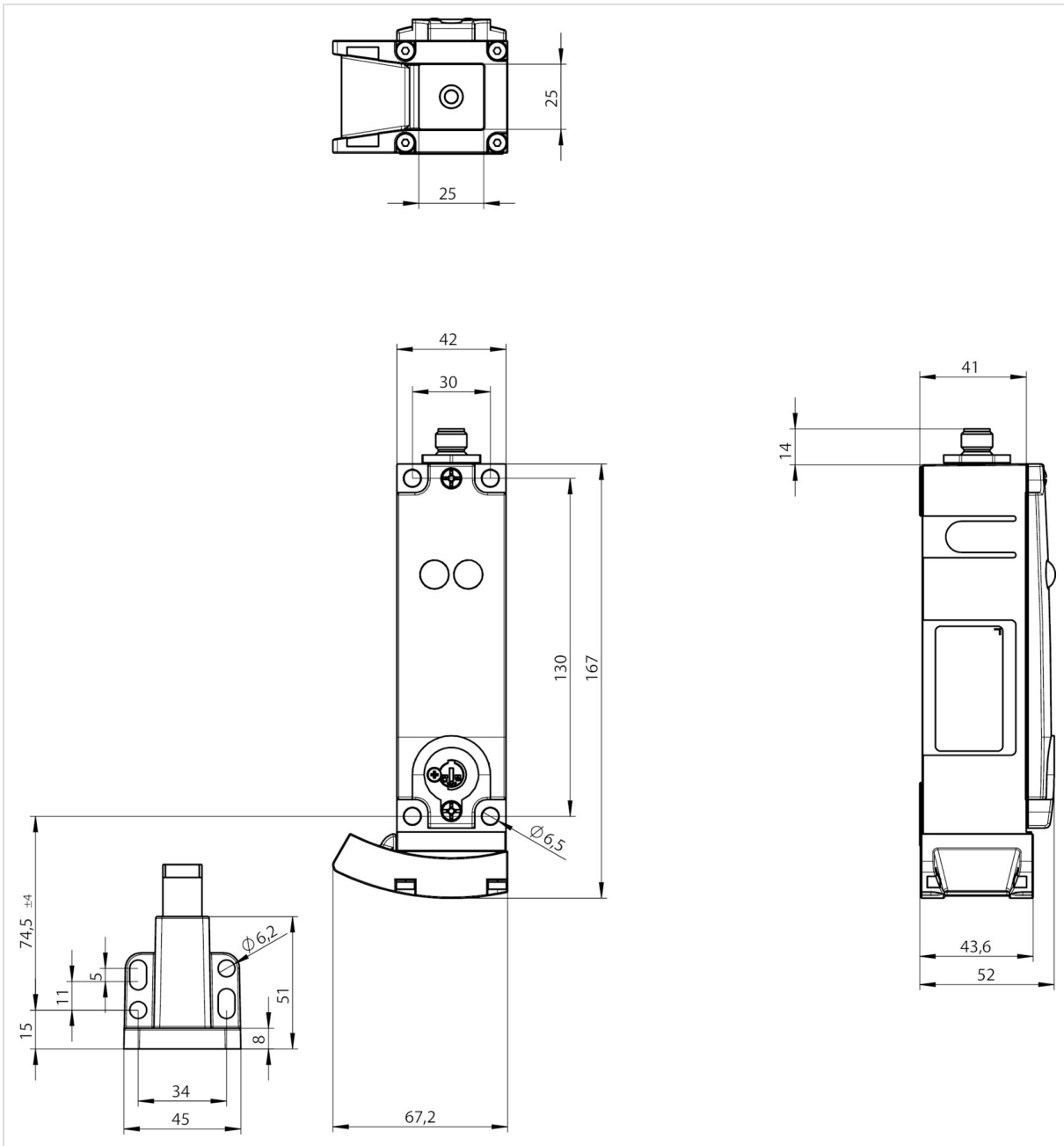
## Notes

- ▶ Special connecting cables from EUCHNER are required for the connection. Please take into account in the order!
- ▶ The device may be operated only in conjunction with the actuator CET-A-.... The actuator must be ordered separately.

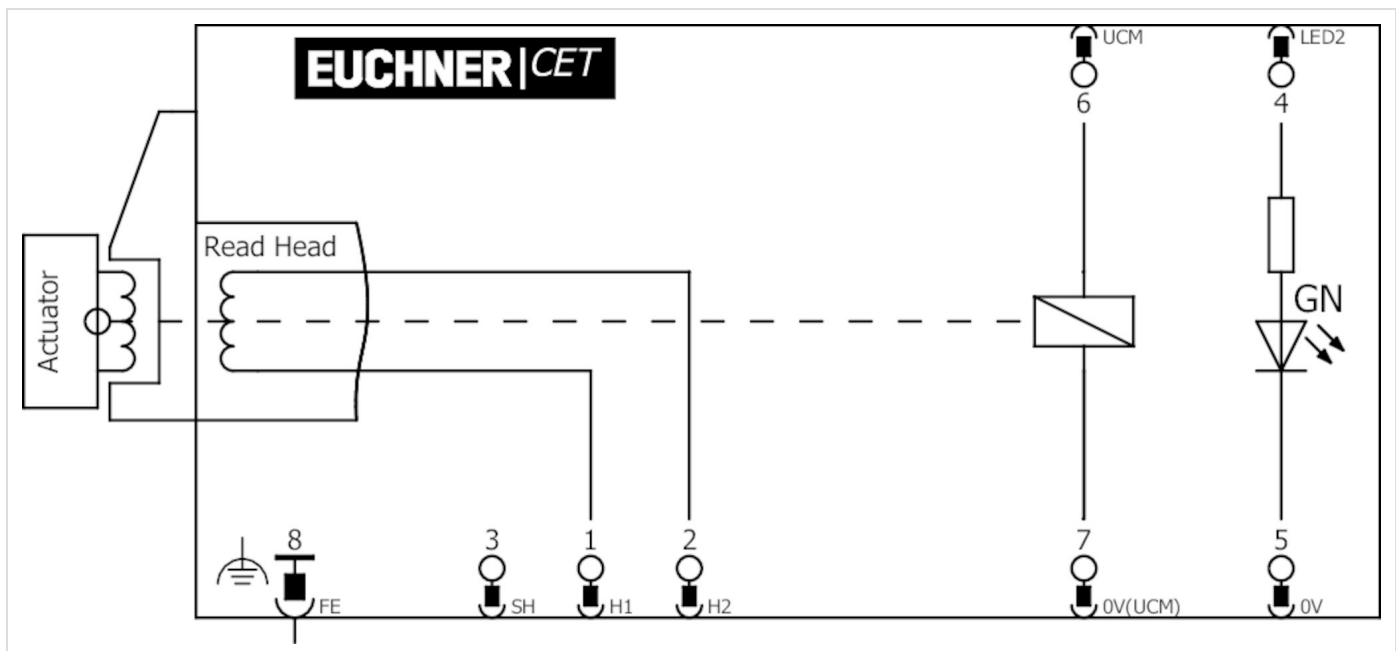
## Auxiliary release

Is used for releasing the guard locking with the aid of a tool. The auxiliary release must be sealed to prevent tampering (for example with sealing lacquer).

## Dimension drawing



Block diagram



## Technical data

### Approvals



### Mechanical values and environment

Degree of freedom X	±5 mm
Degree of freedom Y	±5 mm
Degree of freedom Z	±4 mm
Housing material	
	Safety switch Die-cast aluminum
	Slide Stainless steel
Weight	
	Net 1 kg
Ambient temperature	
	At $U_B = 24V DC$ -20 ... 55 °C
Degree of protection	IP67 (With screwed tight plug connector)
Mechanical life	$1 \times 10^6$
Installation orientation	Any (Preferably head downward)
Switching frequency	1 Hz (This value can vary depending on the evaluation unit used. See system documentation of the related evaluation unit.)
Connection	1 plug connector M12, 8-pin
Approach speed	max.20 m/min
Guard locking principle	Closed-circuit current principle
Locking force $F_{max}$	6500 N
Locking force $F_{Zh}$	5000 N

### Electrical connection ratings

## Operating voltage DC

LED 24 V DC -15% ... 15% Reverse polarity protected

## Current consumption

LED max.6 mA

I<sub>CM</sub> 450 mA Solenoid

## Solenoid operating voltage DC

U<sub>CM</sub> 24 V DC -15% ... +10% Reverse polarity protected, regulated, residual ripple < 5%, PELV

## Rated insulation voltage U<sub>i</sub>

50 V

## Rated impulse withstand voltage U<sub>imp</sub>

1,5 kV

## Connection rating

Solenoid 11 W

## Solenoid duty cycle

100 %

## Degree of contamination (external, according to EN 60947-1)

3

## Safety class

EN IEC 61140 III

## Accessories

### Actuator

#### Actuator CET-A-BWK-50X



**096327**  
CET-A-BWK-50X

- ▶ Actuator for read head/safety switch CET
- ▶ Four safety screws M5x16 included

### Bolt

#### Bolt CET-A-C



**104309**  
RIEGEL CET-A-C

- ▶ Steel bolt
- ▶ In combination with CET
- ▶ For doors hinged on the left or right
- ▶ Can be locked in open position with padlocks

#### Bolt CET-A-C, for swing doors without stop



**109672**  
RIEGEL CET-A-C-C2308

- ▶ Steel bolt
- ▶ In combination with CET
- ▶ For doors hinged on the left or right
- ▶ Can be locked in open position with padlocks
- ▶ Bolt without door stop, suitable for swing doors

## Connection material

## Connection cable with angled plug connector M12, 8-pin, 10m

---



**100456**  
C-M12F08-07X025PV10,0-MA-100456

- ▶ M12 female plug, 8-pin
- ▶ Angled plug connector
- ▶ PVC cable
- ▶ Cable length 10 m
- ▶ With flying lead

## Connection cable with angled plug connector M12, 8-pin, 20m

---



**105071**  
C-M12F08-07X025PV20,0-MA-105071

- ▶ M12 female plug, 8-pin
- ▶ Angled plug connector
- ▶ PVC cable
- ▶ Cable length 20 m
- ▶ With flying lead

## Connection cable with plug connector M12, 8-pin, 10m

---



**102218**  
C-M12F08-07X025PU10,0-MA-102218

- ▶ M12 female plug, 8-pin
- ▶ Straight plug connector
- ▶ PUR cable
- ▶ Cable length 10 m
- ▶ With flying lead



**099633**  
C-M12F08-07X025PV10,0-MA-099633

- ▶ M12 female plug, 8-pin
- ▶ Straight plug connector
- ▶ PVC cable
- ▶ Cable length 10 m
- ▶ With flying lead

## Connection cable with plug connector M12, 8-pin, 20m

---



**099634**  
C-M12F08-07X025PV20,0-MA-099634

- ▶ M12 female plug, 8-pin
- ▶ Straight plug connector
- ▶ PVC cable
- ▶ Cable length 20 m
- ▶ With flying lead

## Connection cable with plug connector M12, 8-pin, 25m

---



**103115**  
C-M12F08-07X025PV25,0-MA-103115

- ▶ M12 female plug, 8-pin
- ▶ Straight plug connector
- ▶ PVC cable
- ▶ Cable length 25 m
- ▶ With flying lead



**103782**  
C-M12F08-07X025PU25,0-MA-103782

- ▶ M12 female plug, 8-pin
- ▶ Straight plug connector
- ▶ PUR cable
- ▶ Cable length 25 m
- ▶ With flying lead

## Function expansion

### Cover for actuator CET

---



**124979**  
AM-C-124979

- ▶ Cover for actuator CET
- ▶ Horizontal and vertical fastening option on the actuator



on the actuator

- ▶ Mounting using 4 screws M5x16 (included with the actuator)
- ▶ Suitable for combination with the lockout bar for CET actuator AE-L-CET-156429

### Cover for read head and actuator CET



**098808**  
CET ABDECKUNG RECHTS

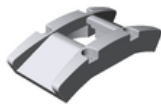
- ▶ Cover for read heads / safety switches CET and actuators CET
- ▶ For approach direction A



**098807**  
CET ABDECKUNG LINKS

- ▶ Cover for read heads / safety switches CET and actuators CET
- ▶ For approach direction C

### Double ramp for safety switch/read head CET



**114091**  
CET-DR

### Emergency unlocking for CET



**103714**  
AE-M-CET-103714



**159080**  
AE-M-CET-159080

### Holder for lockout mechanism CET actuator



**156338**  
Y-CHN-A1-156338

- ▶ Holder (incl. wire rope) for lockout bar CET

### Lockout bar and holder for CET actuators



**155865**  
AE-SET-LCHN-A1-155865

- ▶ Prevents unintentional closing of the door
- ▶ Can be secured with padlocks

### Lockout mechanism for CET actuator



**122600**

- ▶ Prevents unintentional closing of the door



**122609**  
AE-L-CET-122609

- ▶ Prevents unintentional closing of the door
- ▶ Can be secured with padlocks
- ▶ Not suitable in combination with cover AM-C for actuator CET



**156429**  
AE-L-CET-156429

- ▶ Prevents unintentional closing of the door
- ▶ Can be secured with padlocks

## Mechanical key release for CET read head/switch

---



**098850**  
SCHLUESSEL-HILFSENTRIEGELUNG

- ▶ Identical locking
- ▶ Key removable in "unlocked" and "locked" positions

## Mounting accessories



## Efficient protection against tampering for safety switch mounting

---



**161344**  
AM-C-SW4-V3-161344

- ▶ Plastic inserts for hexagon socket screws a/f 4
- ▶ Efficient protection against tampering for safety switch mounting
- ▶ The packaging includes inserts for 18 screws



**161348**  
AM-C-SW5-V3-161348

- ▶ Plastic inserts for hexagon socket screws a/f 5
- ▶ Efficient protection against tampering for safety switch mounting
- ▶ The packaging includes inserts for 18 screws

## Mounting plate EM-P actuator for safety switch CET

---



**126400**  
AM-P-126400

- ▶ Mounting plate for CET actuator
- ▶ Suitable for mounting on aluminum profiles of width 30/40/50 mm
- ▶ Suitable for the mounting plates AM-P-126399 and AM-P-126398

## Mounting plate EM-P handle for safety switch CET

---



**126398**  
AM-P-126398

- ▶ Mounting plate with handle (handle included)
- ▶ For hinged or sliding doors
- ▶ Horizontal and vertical assembly circuits possible
- ▶ Suitable for aluminum profiles of width 30/40/50 mm
- ▶ Suitable for the CET mounting plates AM-P-126399 and AM-P-126400

## Mounting plate EM-P switch for safety switch CET

---



**126399**  
AM-P-126399

- ▶ Mounting plate for CET read heads/switches
- ▶ Direct mounting on aluminum profiles of width 30/40/50 mm
- ▶ Suitable for the mounting plates AM-P-126400 and AM-P-126398

## Mounting plate EMP-L... for CET read head/switches

---



**106695**  
EMP-L-CET

- ▶ Mounting plate for CET read heads/switches
- ▶ For hinged or sliding doors
- ▶ Suitable for aluminum profiles 40 ... 45 mm
- ▶ Horizontal and vertical mounting
- ▶ Suitable for CET with escape release

## Contacts

🏠 EUCHNER GmbH + Co. KG  
Kohlhammerstraße 16  
70771 Leinfelden-Echterdingen

☎ +49 711 7597-0

📠 +49 711 753316

✉ [info\(at\)euchner.de](mailto:info(at)euchner.de)